

SHIP PARTICULARS
Name: ...
IMO No: ...
MMSI: ...
Call Sign: ...
Gross Tonnage: ...
Net Tonnage: ...
Deadweight: ...
Capacity: ...

GENERAL INFORMATION
Classification: ...
Type: ...
Year of Construction: ...
Builder: ...
Dimensions: ...

ENGINEERING
Engine: ...
Power: ...
Fuel: ...
Consumption: ...
Maintenance: ...

STRUCTURE
Hull: ...
Deck: ...
Superstructure: ...
Materials: ...
Strength: ...

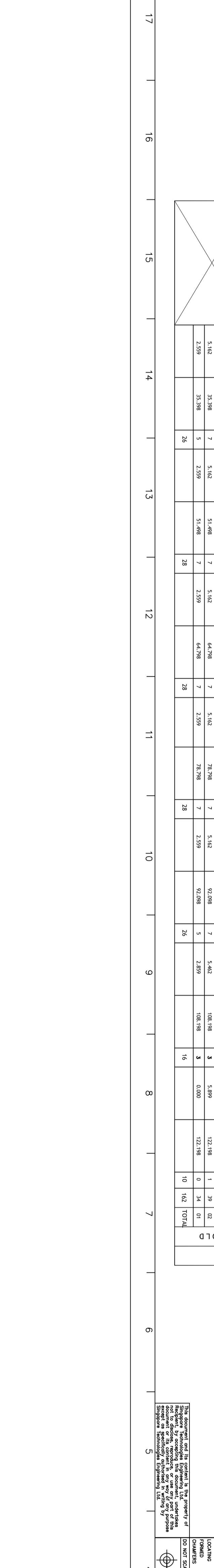
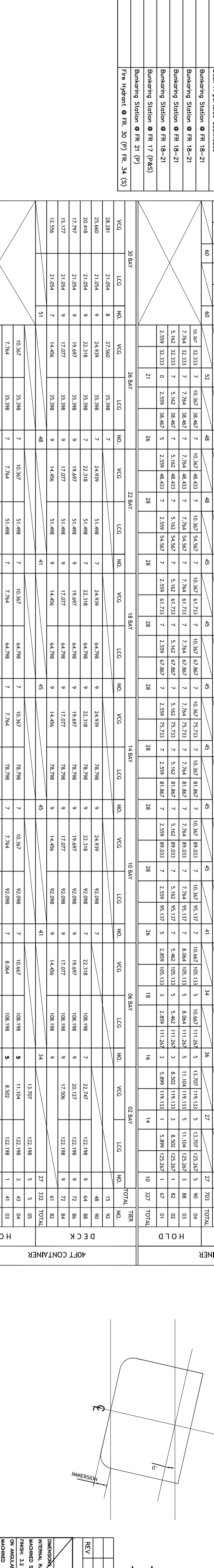
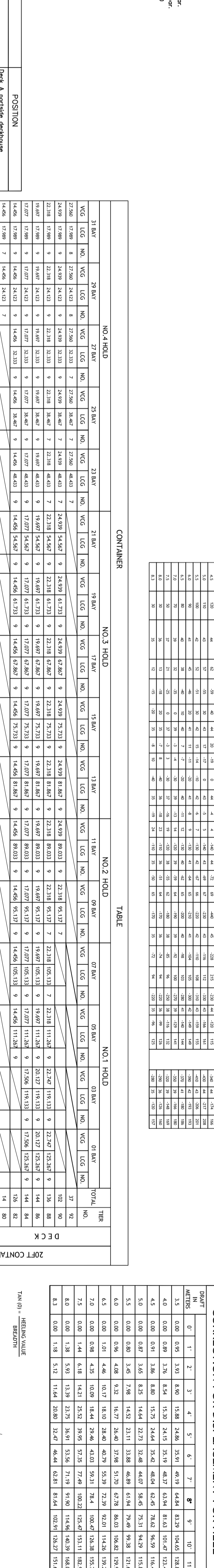
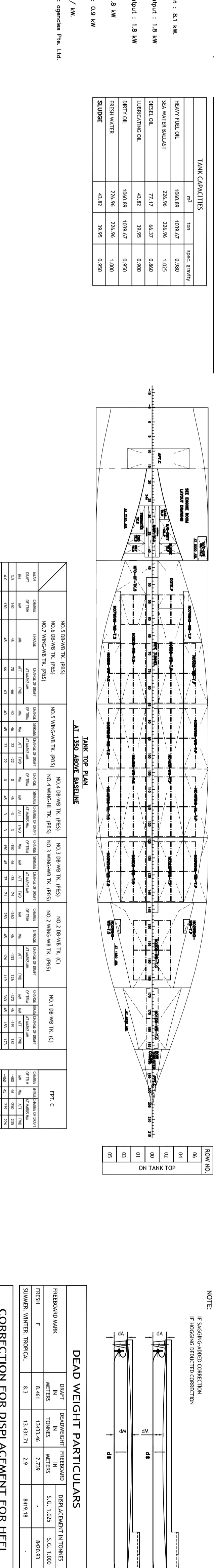
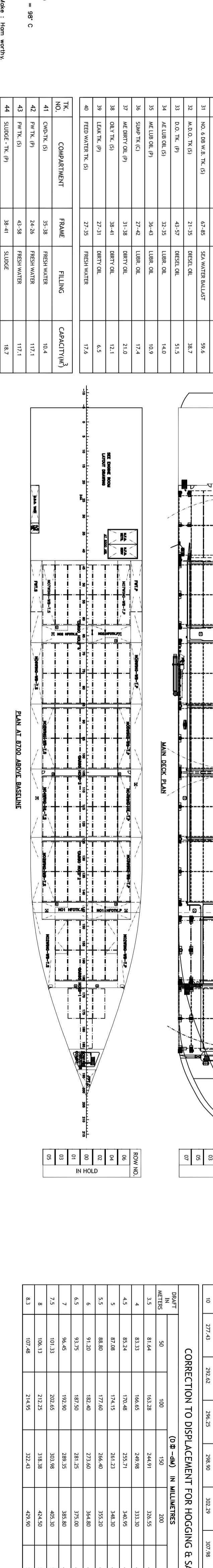
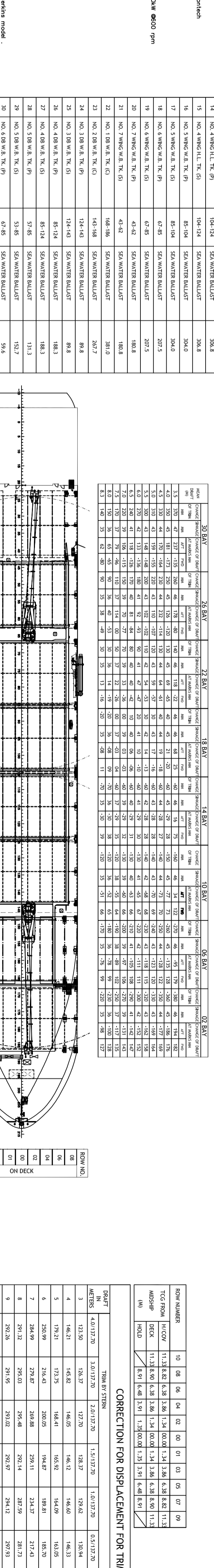
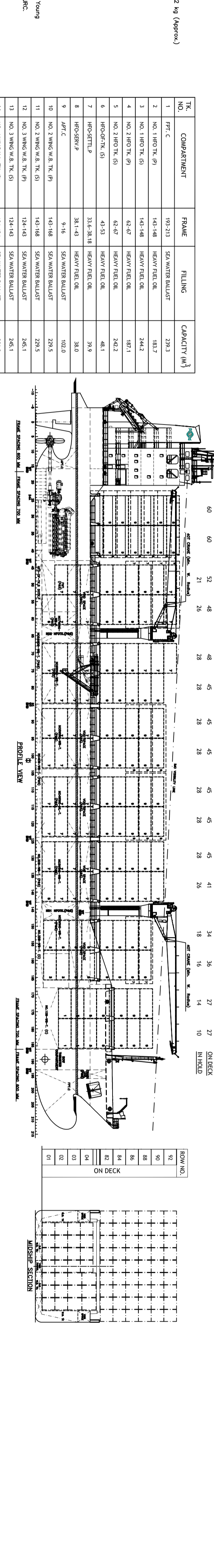
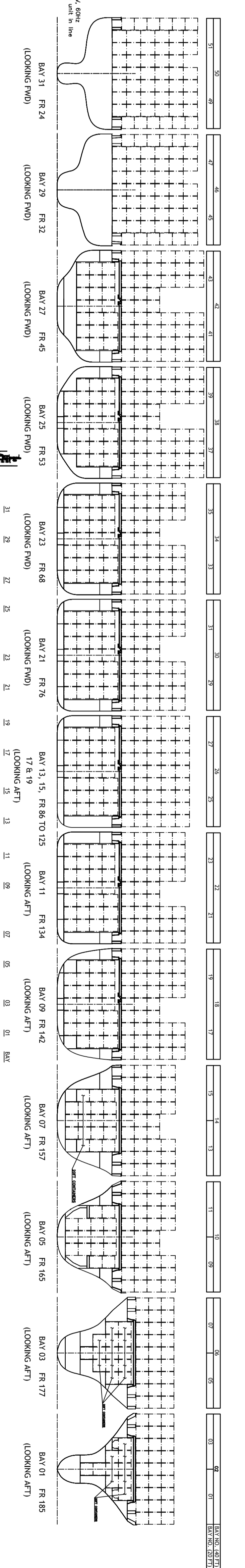
LOADS
Deck: ...
Cargo: ...
Stowage: ...
Tie-down: ...
Securement: ...

CONTAINERS
Type: ...
Capacity: ...
Dimensions: ...
Weight: ...
Usage: ...

STABILITY
Metacentric Height: ...
Righting Arm: ...
Stowage Factor: ...
Trim: ...

SAFETY
Lifeboats: ...
Firefighting: ...
Communication: ...
Emergency: ...

REGULATIONS
SOLAS: ...
MARPOL: ...
ISPS: ...
Other: ...



LOADING SCALE

| Deck | Bay | Length (m) | Width (m) | Capacity (TEU) |
|------|-----|------------|-----------|----------------|
| DECK | 01 | 15.0 | 22.5 | 150 |
| | 02 | 15.0 | 22.5 | 150 |
| DECK | 03 | 15.0 | 22.5 | 150 |
| | 04 | 15.0 | 22.5 | 150 |
| DECK | 05 | 15.0 | 22.5 | 150 |
| | 06 | 15.0 | 22.5 | 150 |
| DECK | 07 | 15.0 | 22.5 | 150 |
| | 08 | 15.0 | 22.5 | 150 |
| DECK | 09 | 15.0 | 22.5 | 150 |
| | 10 | 15.0 | 22.5 | 150 |
| DECK | 11 | 15.0 | 22.5 | 150 |
| | 12 | 15.0 | 22.5 | 150 |
| DECK | 13 | 15.0 | 22.5 | 150 |
| | 14 | 15.0 | 22.5 | 150 |
| DECK | 15 | 15.0 | 22.5 | 150 |
| | 16 | 15.0 | 22.5 | 150 |
| DECK | 17 | 15.0 | 22.5 | 150 |
| | 18 | 15.0 | 22.5 | 150 |
| DECK | 19 | 15.0 | 22.5 | 150 |
| | 20 | 15.0 | 22.5 | 150 |
| DECK | 21 | 15.0 | 22.5 | 150 |
| | 22 | 15.0 | 22.5 | 150 |
| DECK | 23 | 15.0 | 22.5 | 150 |
| | 24 | 15.0 | 22.5 | 150 |
| DECK | 25 | 15.0 | 22.5 | 150 |
| | 26 | 15.0 | 22.5 | 150 |
| DECK | 27 | 15.0 | 22.5 | 150 |
| | 28 | 15.0 | 22.5 | 150 |

DEAD WEIGHT PARTICULARS

| Item | Weight (kg) |
|-----------|-------------|
| HULL | 10000 |
| ENGINE | 5000 |
| DECK | 2000 |
| EQUIPMENT | 1000 |
| RESERVE | 500 |
| TOTAL | 19500 |

EMERGENCY DIMENSIONS

| Parameter | Value |
|-----------|---------|
| LENGTH | 150.0 m |
| BREADTH | 22.5 m |
| DEPTH | 10.0 m |
| DRIFT | 1.0 m |
| STABILITY | 1.0 m |

CLASSIFICATION

AMS + AT (G) + AHS + ACU - CONTAINER VESSEL

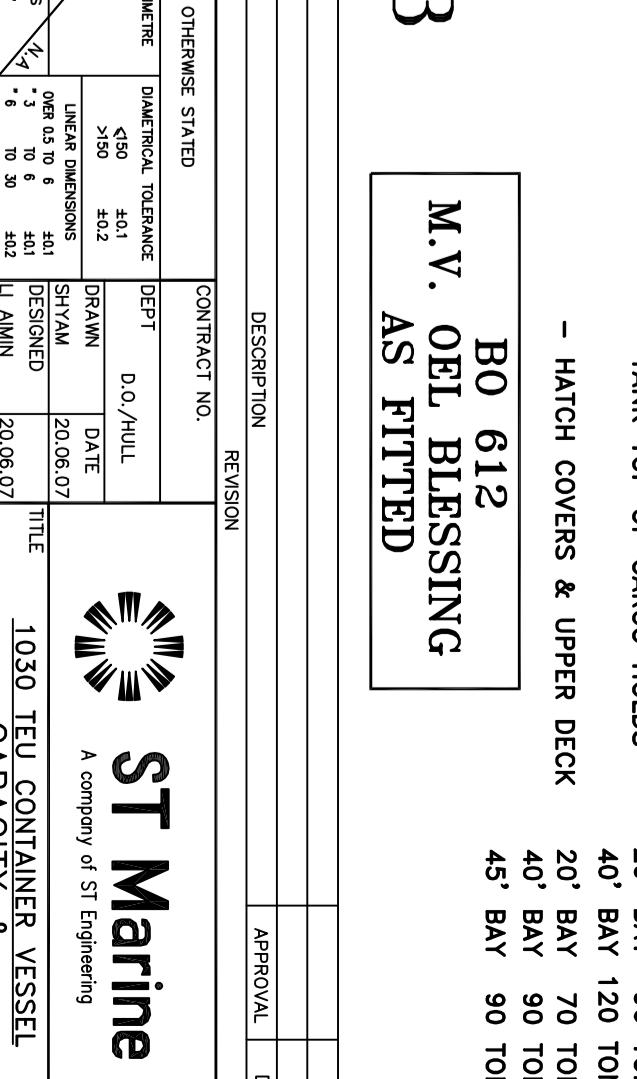
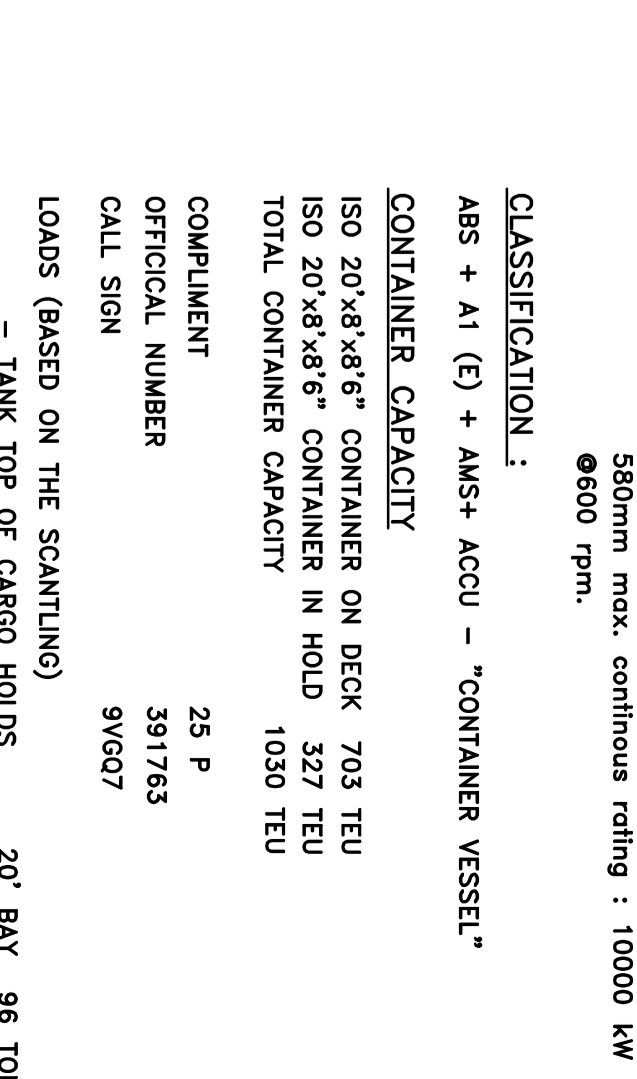
CLASSIFICATION: ...

CONTAINER CAPACITY: ...

STOWAGE FACTOR: ...

LOADS (BASED ON THE STOWAGE)

| Bay | Weight (T) |
|-----|------------|
| 01 | 150 |
| 02 | 150 |
| 03 | 150 |
| 04 | 150 |
| 05 | 150 |
| 06 | 150 |
| 07 | 150 |
| 08 | 150 |
| 09 | 150 |
| 10 | 150 |
| 11 | 150 |
| 12 | 150 |
| 13 | 150 |
| 14 | 150 |
| 15 | 150 |
| 16 | 150 |
| 17 | 150 |
| 18 | 150 |
| 19 | 150 |
| 20 | 150 |
| 21 | 150 |
| 22 | 150 |
| 23 | 150 |
| 24 | 150 |
| 25 | 150 |
| 26 | 150 |
| 27 | 150 |
| 28 | 150 |



ST Marine
LOADING SCALE
CONTAINER CAPACITY & STOWAGE

27 BAY 98 TONNES
40 BAY 120 TONNES
20 BAY 70 TONNES
40 BAY 50 TONNES
40 BAY 30 TONNES