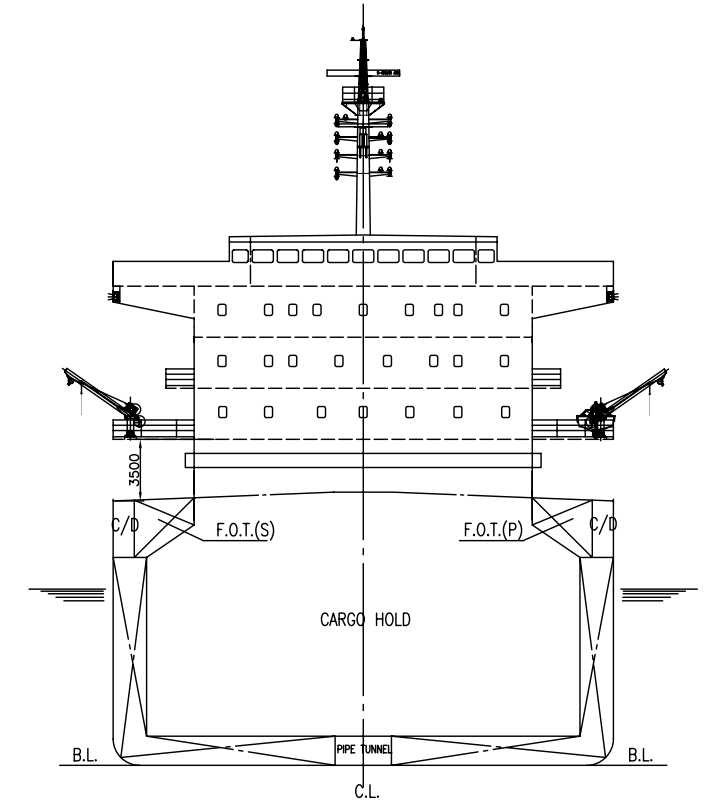
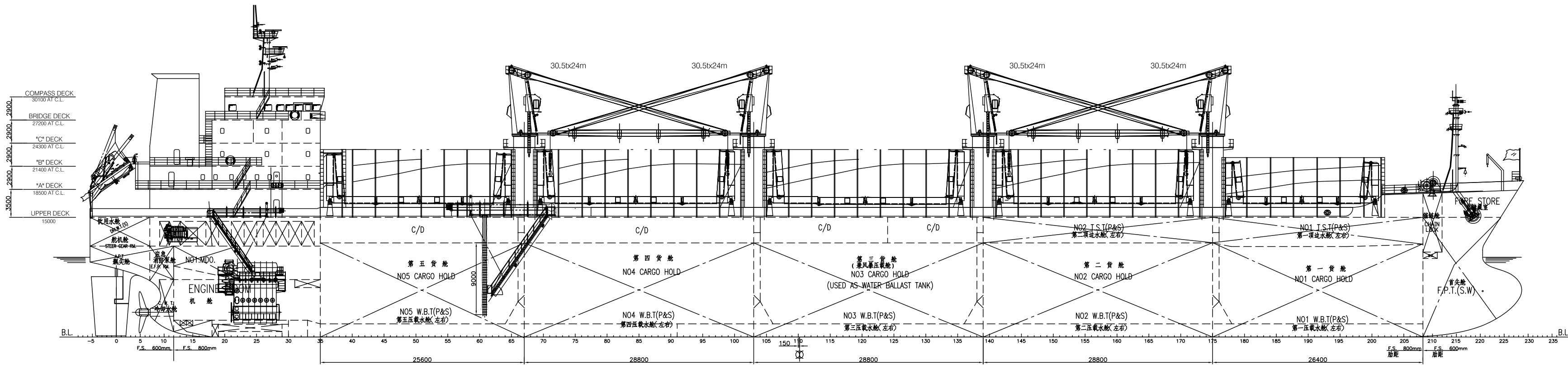
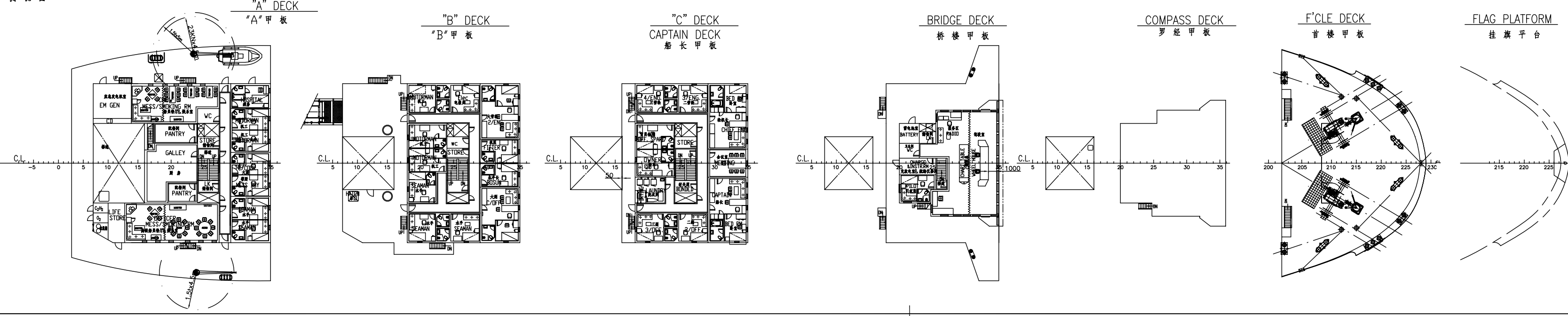


PRINCIPAL PARTICULARS

| | |
|-----------------|--------------|
| LENGTH O.A. | abt.179.90 m |
| LENGTH B.P. | 171.50 m |
| BREADTH MLD. | 28.40 m |
| DEPTH MLD. | 15.00 m |
| DESIGNED DRAFT | 10.00 m |
| SCANTLING DRAFT | 10.80 m |



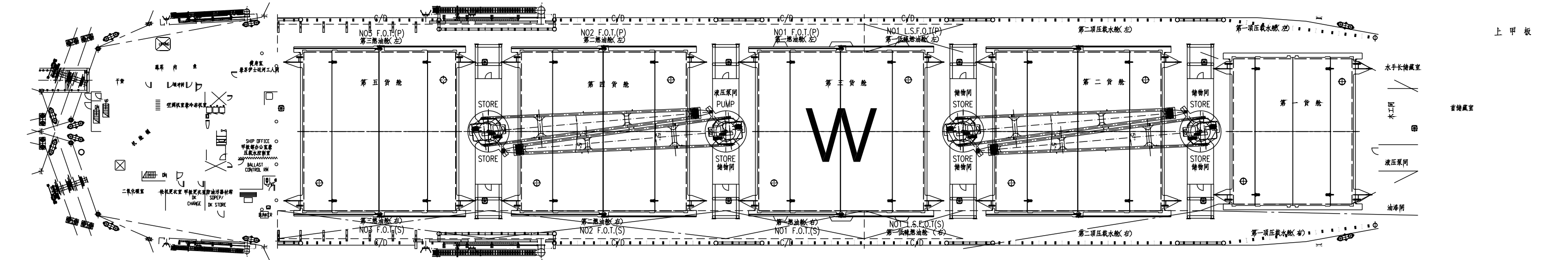
PROFILE
侧视图



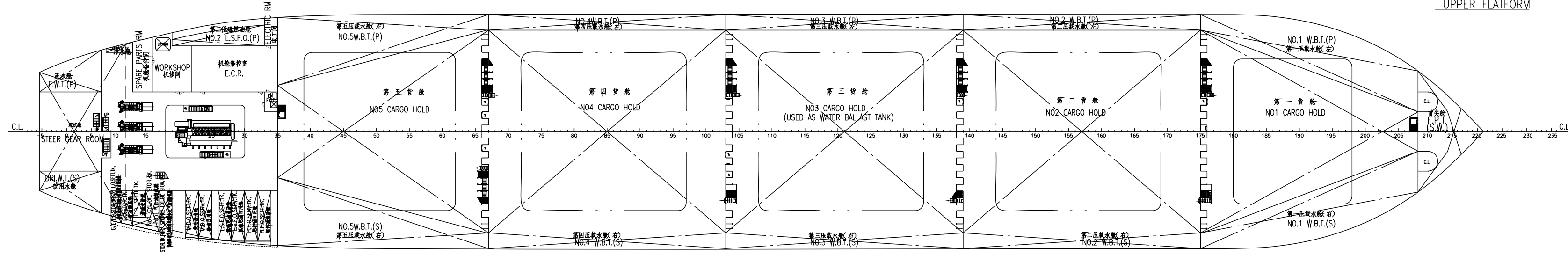
SHIP NAME : ORIENTAL HARMONY
IMO NO : 9455399

| | | | |
|----------|---------------------------------|---------------|----------------|
| BUILDER | NANJING DONGZE SHIPYARD CO.,LTD | HULL NO. | DZ06H-16 |
| OWNER | DAEWOO | CLASS | KR |
| TITLE | 35,000 DWT BULK CARRIER | DETAIL DESIGN | |
| DESIGNED | | DWG. No. | JH429G1-100-05 |
| CHECKED | | SCALE | WEIGHT |
| VERIFIED | | PAGE | DATE |
| APPROVED | | 1/200 | 0 kg 1/2 |

SHANGHAI BESTWAY MARINE ENGINEERING DESIGN CO.,LTD
111 Cao Bao Road Shanghai, CHINA P.C:200233
Tel:86-21-6436 5500 Fax:86-21-5448 7783 Email: luckway@mail.online.sh.cn

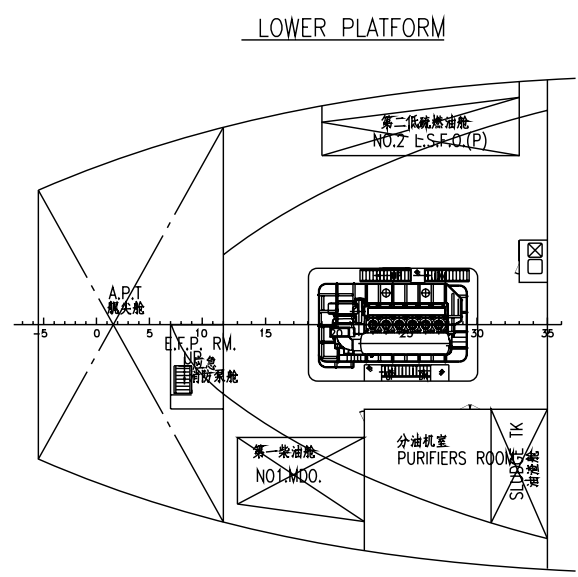


上甲板



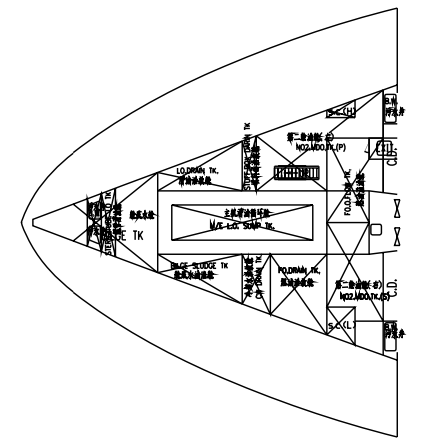
LOWER PLATFORM

UPPER PLATFORM



LOWER PLATFORM

SHIP NAME :ORIENTAL HARMONY
 IMO NO :9455399



第五頂壓載水艙(左)

第四頂壓載水艙(左)

第三頂壓載水艙(左)

第二頂壓載水艙(左)

第一頂壓載水艙(左)

第五頂壓載水艙(右)

第四頂壓載水艙(右)

第三頂壓載水艙(右)

第二頂壓載水艙(右)

第一頂壓載水艙(右)

LOG

I

SOUNDER