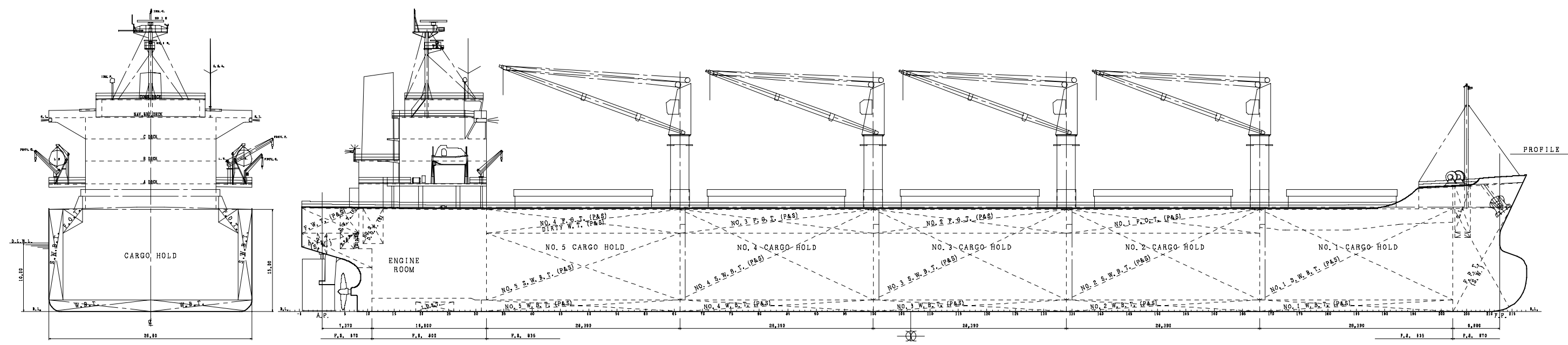
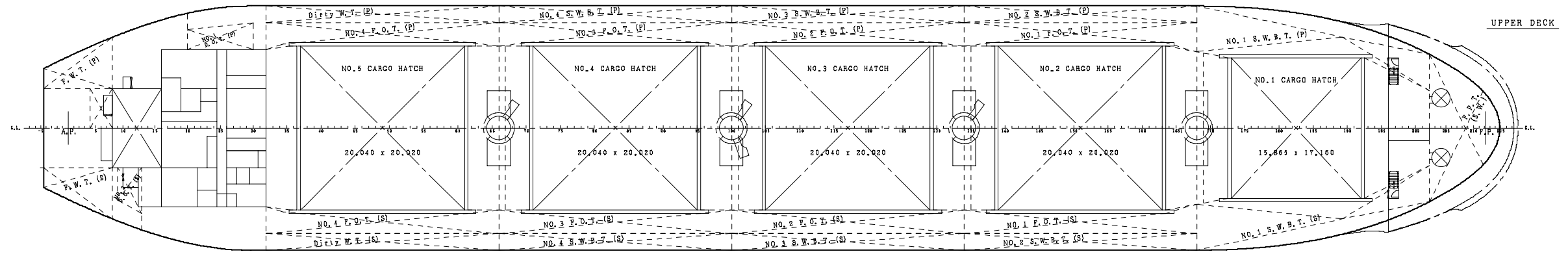


15 CAPACITY TABLE

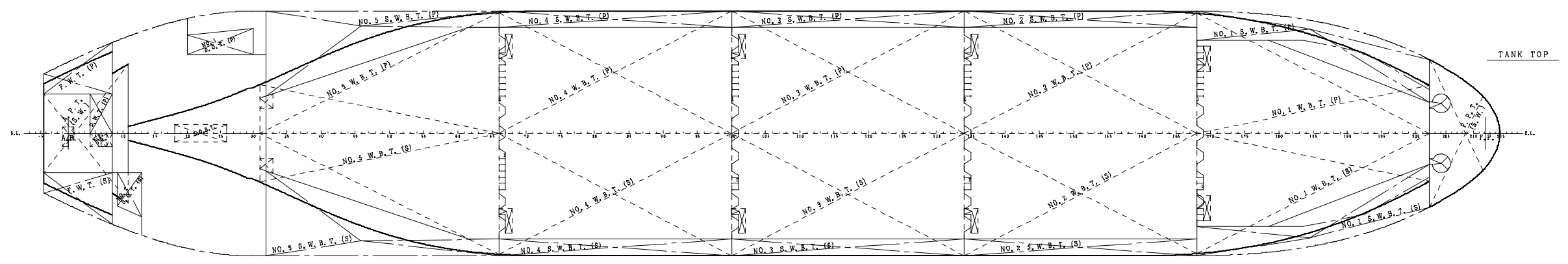


FRONT VIEW

PROFILE



UPPER DECK



TANK TOP

CAPACITY TABLE (CARGO HOLD)

* CARGO HOLD (GRAIN)

EQUIVALENT USED : 1m³ = 35.315 CF

NAME		POSITION	CAPACITY		L.C.G.	K.G.
		FRAME	M ³	CF	M	M
NO.1 CARGO HOLD	HATCH	173 - 192	450.92	15,924.24	-63.34	16.07
	HOLD	168.5 - 202	7,256.50	256,263.30	-64.40	8.35
SUM (NO.1 C.H.)		/	7,707.42	272,187.54	-64.34	8.80
NO.2 CARGO HOLD	HATCH	139 - 163	670.96	23,694.95	-37.04	16.06
	HOLD	134.5 - 168.5	9,261.78	327,079.76	-37.37	8.19
SUM (NO.2 C.H.)		/	9,932.74	350,774.71	-37.35	8.72
NO.3 CARGO HOLD	HATCH	105 - 129	670.96	23,694.95	-8.65	16.06
	HOLD	100.5 - 134.5	9,295.86	328,283.30	-9.04	8.19
SUM (NO.3 C.H.)		/	9,966.82	351,978.25	-9.01	8.72
NO.4 CARGO HOLD	HATCH	71 - 95	670.96	23,694.95	19.75	16.02
	HOLD	66.5 - 100.5	9,284.21	327,871.88	19.34	8.19
SUM (NO.4 C.H.)		/	9,955.17	351,566.83	19.37	8.72
NO.5 CARGO HOLD	HATCH	37 - 61	670.96	23,694.95	48.14	16.06
	HOLD	32 - 66.5	8,892.54	314,040.05	47.44	8.47
SUM (NO.5 C.H.)		/	9,563.50	337,735.00	47.49	9.00
TOTAL		/	47,125.65	1,664,242.33	/	/

* CARGO HOLD (BALE)

EQUIVALENT USED : 1m³ = 35.315 CF

NAME		POSITION	CAPACITY		L.C.G.	K.G.
		FRAME	M ³	CF	M	M
NO.1 CARGO HOLD	HATCH	173 - 192	450.92	15,924.24	-63.34	16.07
	HOLD	168.5 - 202	6,929.13	244,702.23	-64.53	8.20
SUM (NO.1 C.H.)		/	7,380.05	260,626.47	-64.46	8.66
NO.2 CARGO HOLD	HATCH	139 - 163	670.96	23,694.95	-37.04	16.06
	HOLD	134.5 - 168.5	8,904.71	314,469.83	-37.44	8.10
SUM (NO.2 C.H.)		/	9,575.67	338,164.78	-37.41	8.64
NO.3 CARGO HOLD	HATCH	105 - 129	670.96	23,694.95	-8.65	16.06
	HOLD	100.5 - 134.5	8,907.56	314,570.48	-9.05	8.10
SUM (NO.3 C.H.)		/	9,578.52	338,265.43	-9.02	8.64
NO.4 CARGO HOLD	HATCH	71 - 95	670.96	23,694.95	19.75	16.02
	HOLD	66.5 - 100.5	8,906.98	314,550.00	19.34	8.11
SUM (NO.4 C.H.)		/	9,577.94	338,244.95	19.37	8.64
NO.5 CARGO HOLD	HATCH	37 - 61	670.96	23,694.95	48.14	16.06
	HOLD	32 - 66.5	8,585.97	303,213.53	47.60	8.37
SUM (NO.5 C.H.)		/	9,256.93	326,908.48	47.64	8.91
TOTAL		/	45,369.11	1,602,210.11	/	/

CAPACITY TABLE (TANK)

* WATER BALLAST TANK (100% FULL)

S.G. : SEA WATER = 1.025

NAME		POSITION	CAPACITY	WEIGHT	L.C.G.	K.G.
		FRAME	M ³	MT	M	M
FORE PEAK TANK	C	202 - F.E.	1,031.06	1,056.84	-82.93	7.92
NO.1 W.B.T.	P	168 - 202	480.63	492.65	-63.28	0.89
	S	168 - 202	480.63	492.65	-63.28	0.89
NO.2 W.B.T.	P	134 - 168	680.34	697.35	-37.06	0.86
	S	134 - 168	680.34	697.35	-37.06	0.86
NO.3 W.B.T.	P	100 - 134	682.39	699.45	-8.70	0.86
	S	100 - 134	682.39	699.45	-8.70	0.86
NO.4 W.B.T.	P	66 - 100	680.28	697.29	19.65	0.86
	S	66 - 100	680.28	697.29	19.65	0.86
NO.5 W.B.T.	P	31 - 66	487.30	499.48	46.15	0.90
	S	31 - 66	487.30	499.48	46.15	0.90
NO.1 S.W.B.T.	P	168 - 202	1,041.53	1,067.57	-63.64	9.19
	S	168 - 202	1,041.53	1,067.57	-63.64	9.19
NO.2 S.W.B.T.	P	134 - 168	753.02	771.85	-37.02	8.37
	S	134 - 168	753.02	771.85	-37.02	8.37
NO.3 S.W.B.T.	P	100 - 134	753.63	772.47	-8.64	8.37
	S	100 - 134	753.63	772.47	-8.64	8.37
NO.4 S.W.B.T.	P	66 - 100	753.51	772.35	19.75	8.37
	S	66 - 100	753.51	772.35	19.75	8.37
NO.5 S.W.B.T.	P	32 - 66	584.02	598.62	48.57	6.39
	S	32 - 66	584.02	598.62	48.57	6.39
AFT PEAK TANK	C	A.E. - 11	307.71	315.40	83.93	9.89
TOTAL			15,132.07	15,510.40		

* FRESH WATER TANK (100% FULL)

S.G. : FRESH & DRINK WATER = 1.000

NAME		POSITION	CAPACITY	WEIGHT	L.C.G.	K.G.
		FRAME	M ³	MT	M	M
FRESH WATER T.	P	A.E. - 8	123.22	123.22	84.67	13.41
	S	A.E. - 8	123.22	123.22	84.67	13.41
DRINK WATER T.	P	4 - 8	48.40	48.40	82.48	13.37
TOTAL			294.84	294.84		

* FUEL OIL TANK (100% FULL)

S.G. : HEAVY OIL = 0.980

DIESEL OIL = 0.880

NAME		POSITION	CAPACITY	WEIGHT	L.C.G.	K.G.
		FRAME	M ³	MT	M	M
NO.1 FUEL OIL T.	P	134 - 168	223.62	219.15	-37.18	13.65
	S	134 - 168	223.62	219.15	-37.18	13.65
NO.2 FUEL OIL T.	P	100 - 134	221.16	216.74	-8.65	13.64
	S	100 - 134	221.16	216.74	-8.65	13.64
NO.3 FUEL OIL T.	P	66 - 100	221.16	216.74	19.75	13.64
	S	66 - 100	221.16	216.74	19.75	13.64
NO.4 FUEL OIL T.	P	32 - 66	221.97	217.53	48.18	13.65
	S	32 - 66	221.97	217.53	48.18	13.65
SUM			1,775.82	1,740.32		
NO.1 DIESEL OIL T.	P	20 - 30	113.83	100.17	67.32	12.07
NO.2 DIESEL OIL T.	S	9 - 13	56.74	49.93	78.96	12.95
SUM			170.57	150.10		
TOTAL			1,946.39	1,890.42		

* LUBRICATING OIL TANK (100% FULL)

S.G. : LUBRICATING OIL = 0.920

NAME		POSITION	CAPACITY	WEIGHT	L.C.G.	K.G.
		FRAME	M ³	MT	M	M
L. O. SUMP T.	C	18 - 26	17.00	15.64	70.33	0.64
S/T L. O. SUMP T.	P	13 - 15	1.56	1.44	76.69	1.49
TOTAL			18.56	17.08		

* OTHER

NAME		POSITION	CAPACITY	L.C.G.	K.G.
		FRAME	M ³	M	M
DIRTY W.T.	P	32 - 66	201.41	48.12	13.24
	S	32 - 66	201.41	48.12	13.24
BILGE SLUDGE T.	P	24 - 31	21.33	65.64	1.05
F.O.OVERFLOW T.	S	28 - 31	13.40	64.17	0.91
M/E A/C DRAIN T.	S	24 - 28	10.48	66.99	1.09
BILGE T.	C	11 - 17	16.89	76.09	0.92
S/T C.W.T.	C	6 - 11	9.42	79.87	3.14